

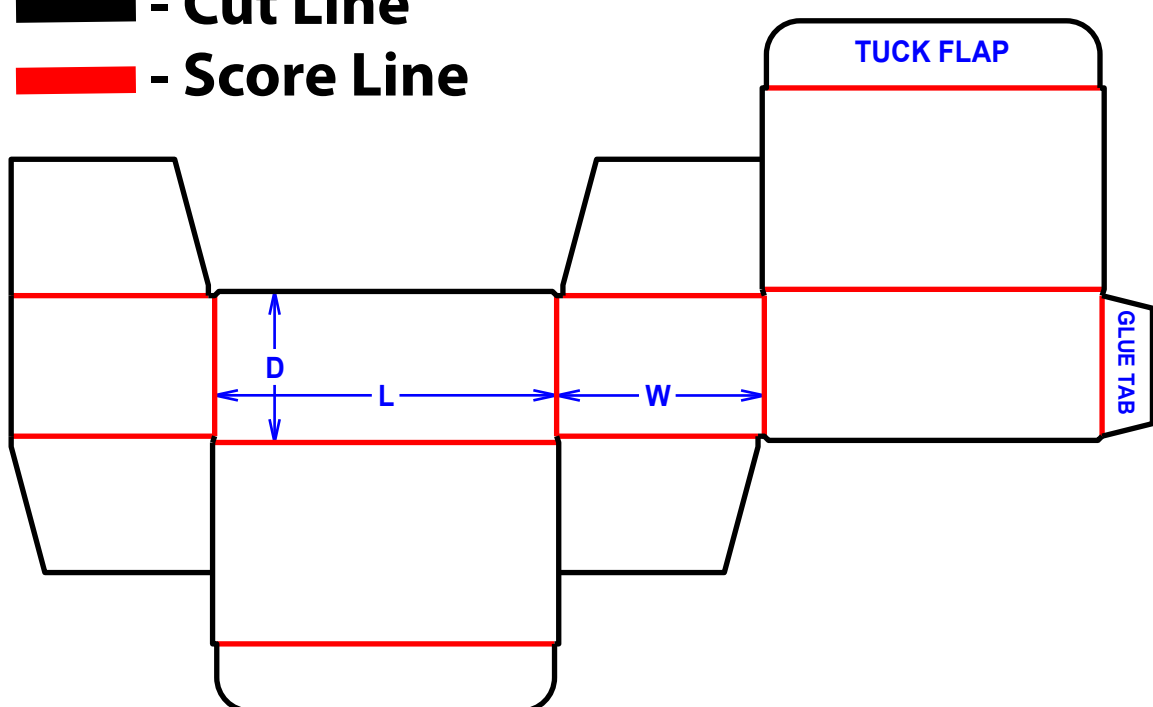


# Slotted Cartons

## F0211 Self Locking - Glued

Tooling Required

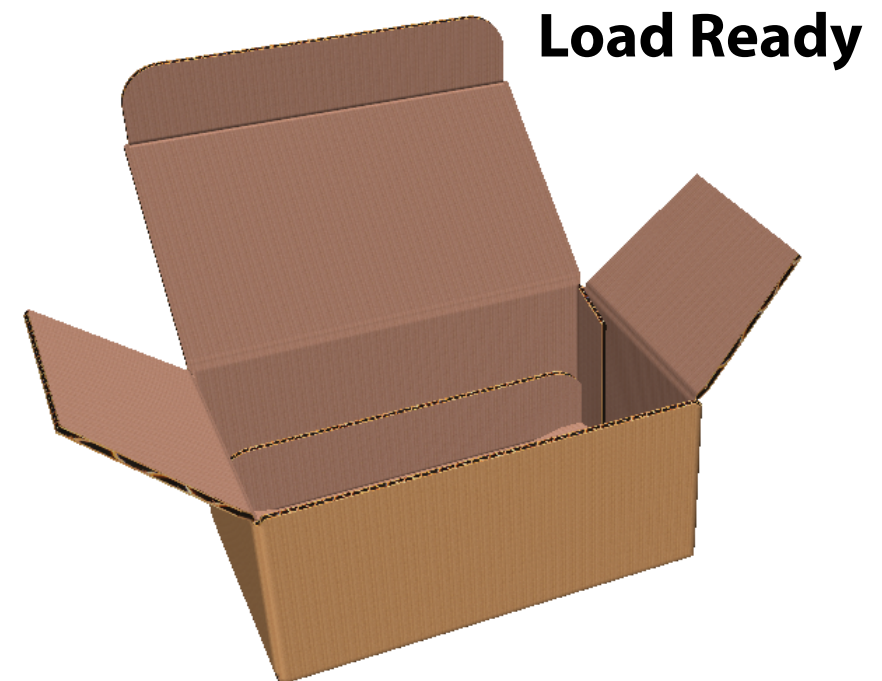
 - Cut Line  
 - Score Line



### Self Locking Shipper - Glued

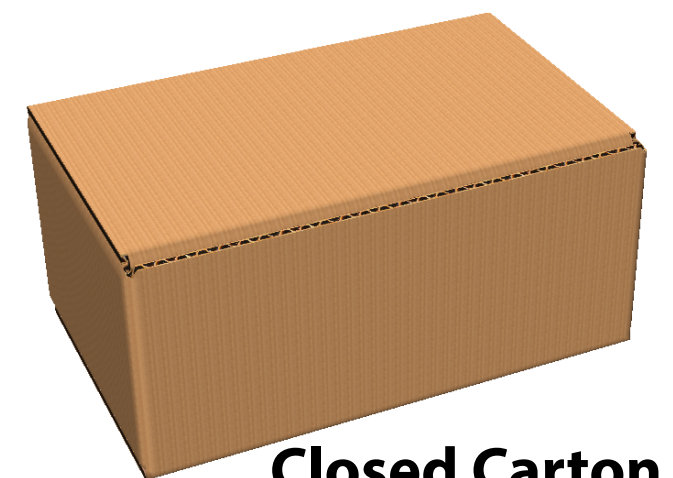
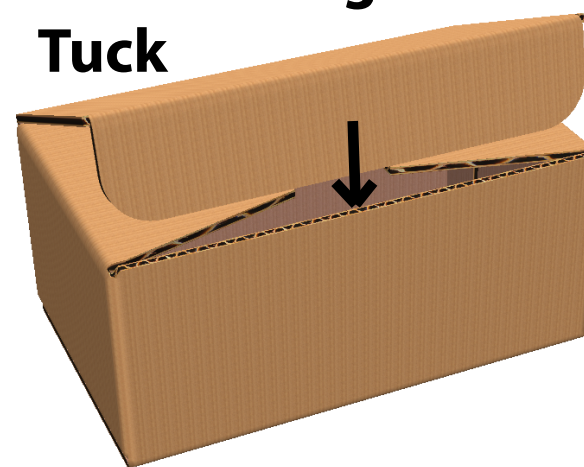
A container with dual self locking tucks for easier assembly and less required taping. Also allows for a tab lock feature\* to eliminate the need for taping.

\*Not Shown



Load Ready

Self Locking Tuck

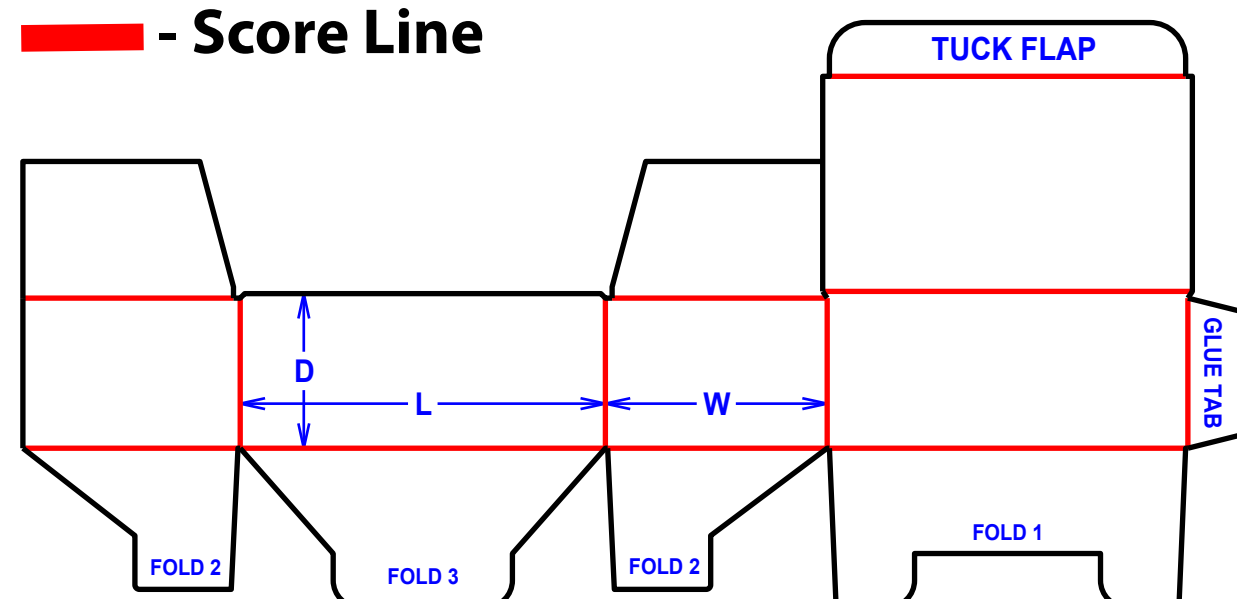


Closed Carton

## F0215 1-2-3 Bottom

Tooling Required

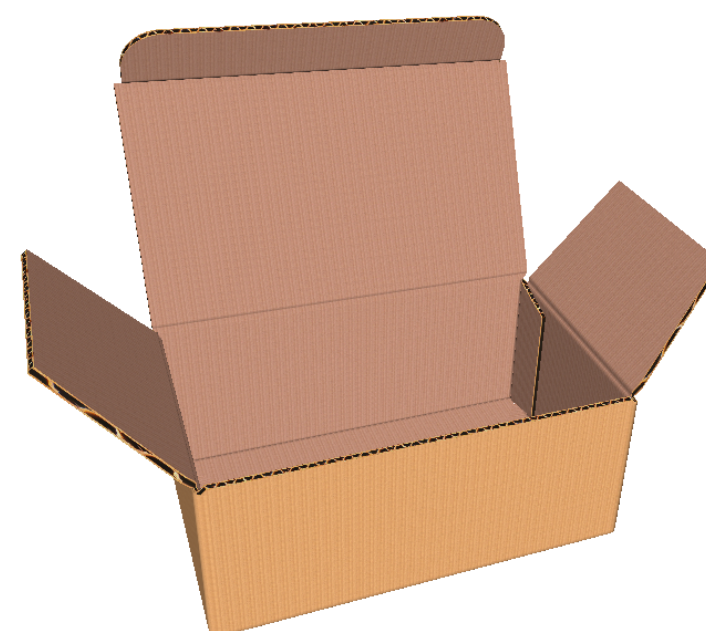
 - Cut Line  
 - Score Line



### 1-2-3 Bottom

A container with a die cut bottom, allowing for easy assembly without requiring tape. Top style can vary depending on customer use. Due to self locking nature, this style may not be suitable for heavy loads.

Bottom View



Self Locking Tuck

